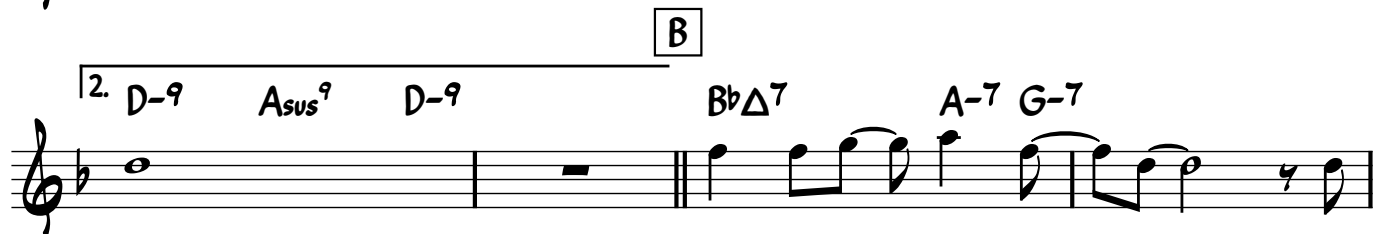
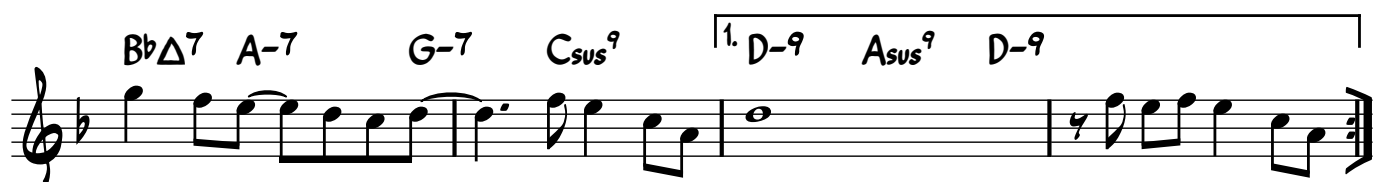
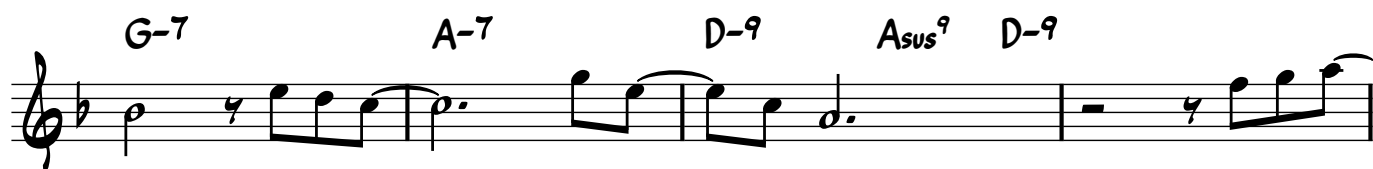
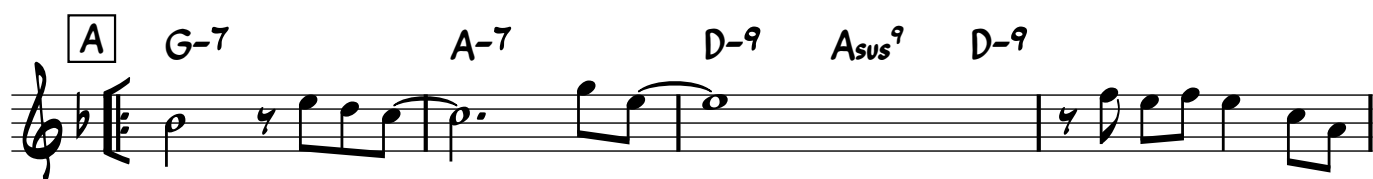
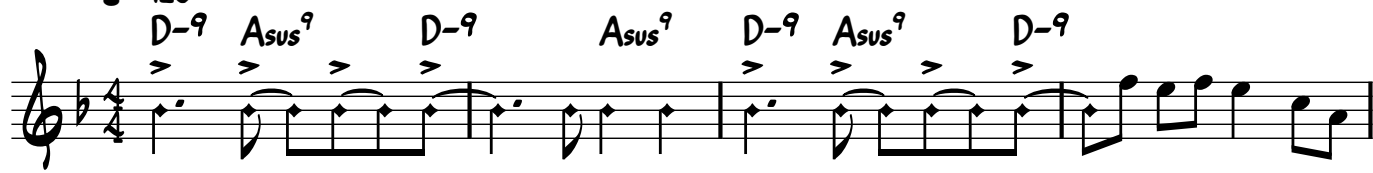


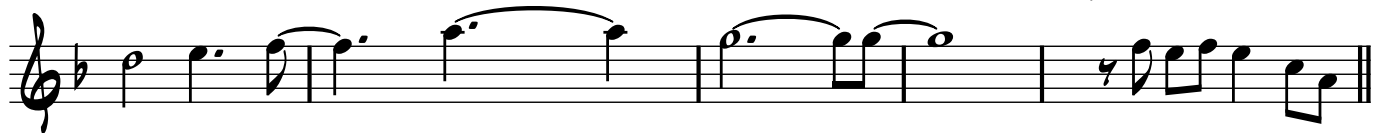
# The Pull of the Moon (C)

Carol Heffler

♩ = 120



2

A-7 G-7 G-7 A-7 B $\flat$  $\Delta$ 7 G $^9$ /B G-7/C C/D

C

G-7

A-7

D-9

Asus $^9$ 

D-9



G-7

A-7

D-9

Asus $^9$ 

D-9

B $\flat$  $\Delta$ 7

A-7

G-7

A-7

B $\flat$  $\Delta$ 7

A-7

B $\flat$  $\Delta$ 7

A-7

G-7

Csus $^9$ 

D-9

Asus $^9$ 

D-9

⊕



⊕

D-9

Asus $^9$ 

D-9

Asus $^9$ 