

CONTEMPLATION

- McCoy TYNER

(SLOW 3)

INTRO C-II

(BASS)



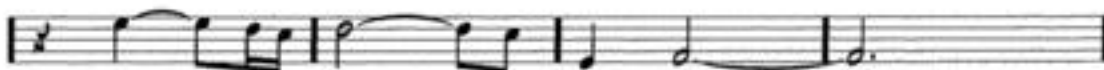
OPEN SOLO OVER INTRO VAMP

HEAD

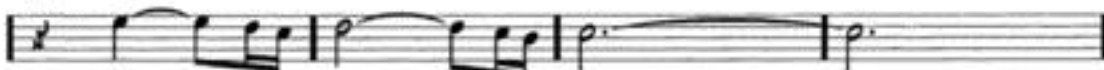
C-II



BASS CONT. RHYTHM SIM.



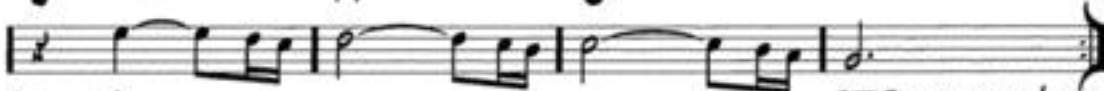
Abmaj7



G7#5(b9)

Ab7(#11)

G7#5(b9)



(ENDING)

REPEAT HEAD IN/OUT



C-II (OPEN SOLO)

(LAST X)

REPEAT AS DESIRED

FINE